

Propane Stove Maintenance



Coleman 2-burner Propane stove

Setup

DANGER! Carbon Monoxide hazard. For outdoor use only. Never use in a house, camper, tent, vehicle or other enclosed area

1. Open lid and position wind baffles as shown. Insert wire clips into slots.
2. Close both burner valves firmly
3. Remove regulator from storage position under grate and inspect “O” ring on stove connection before use. Firmly insert regulator tube into stove and tighten captive connector.
4. Remove plastic cap from top of propane cylinder and screw cylinder into regulator hand tight.
5. Inspect for leaks. If you smell gas: Do not attempt to light appliance; Extinguish any open flame; Disconnect from fuel supply.

Note: The performance of Propane Stoves will not be affected by temperatures above 0° F/-18° C. As the temperature drops below 0° F/-18° C, there will be a gradual reduction of maximum heat output down to -20°F/-29° C where the stove may fail to function.

- A 1 lb cylinder lasts 1 hour with both burners on high, and approximately 4.5 hours on low.
- Boils a quart of water in 4.5 minutes

To Light

1. Hold lighted match near burner and open burner valve.
2. Adjust flame with burner valves
3. Flame should be blue with a hint of yellow on tips.

To Turn off

1. Close burner valves firmly

To Store

1. Remove propane cylinder from regulator and replace plastic cap on cylinder.
2. Unscrew regulator from stove and place in storage position under grate.
3. When clean and dry, place your stove in a plastic bag and seal it with a rubber band to keep dust and insects out.

To Clean

1. Lift off grate
2. Wipe clean with soft cloth and mild household cleaner. Do not use abrasives.

Empty cylinder disposal

Residential recycling programs are not yet available in most areas. Most local steel recyclers will not recycle propane cylinders, as there is not currently a means to guarantee that the bottle is empty.

To properly dispose of an EMPTY 16.4 oz. propane cylinder:

- Take the EMPTY cylinder outdoors away from any open flame or ignition source as they can ignite leaking gas.
- Attach the EMPTY cylinder to an appliance.
- In an outdoor, well-ventilated area, open the control valve on the appliance and light the burner(s).
- Operate the appliance until the flame completely extinguishes.
- Turn the appliance control valve off and let appliance cool.
- Detach the EMPTY cylinder.
- Dispose of the EMPTY cylinder in an OUTDOOR trash container for the next normal trash collection.

Four Major Stove Problems

1. Cracked or broken “O” ring.
2. Clogged fuel tubes.
3. Leaky valves
4. Wet stove burners

Stove Troubleshooting

Fuel Leakage:

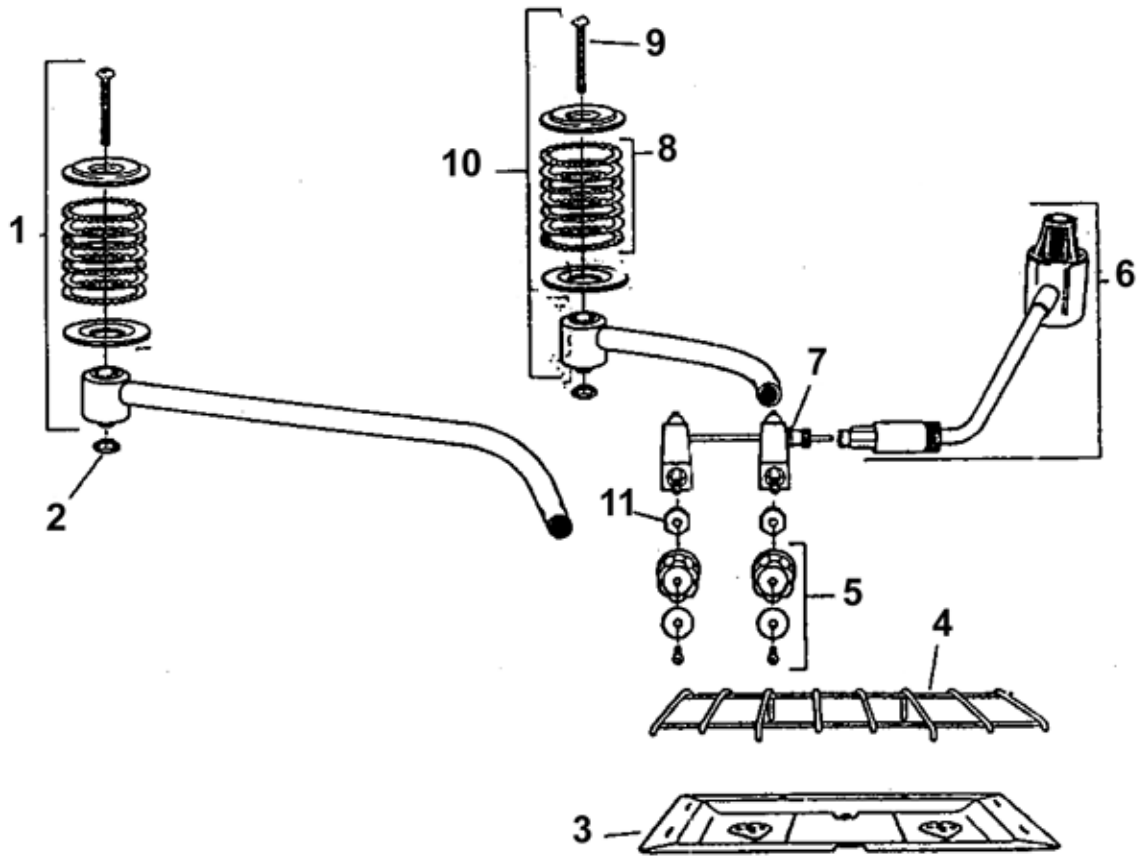
- At fuel bottle: Cylinder not tight.
- At connectors: Seals or “O” rings damaged.
- At valve: valve or seals are damaged.

Limited or No Fuel:

- No fuel: Tank is empty; fuel tube is clogged; and/or fuel is too cold.
- Cylinder is not fully seated in regulator
- Regulator is not firmly inserted into stove

Reduced Performance

- Lack of fuel: Check cylinder.
- Obstructions: Clean burners
- Too cold: Propane appliances are not suitable for use at temperatures below $-20^{\circ}\text{F}/-29^{\circ}\text{C}$. -- warm cylinder in sleeping bag.



Parts List

1 LEFT BURNER ASSY

3 COOK TOP

4 GRATE ASSY

5 VALVE WHEEL

6 REGULATOR ASSY

7 VALVE ASSY

8 BURNER RINGS

9 SCREW X 2

10 RIGHT BURNER ASSY

11 SMALL PARTS KIT

Cleaning your Stove

A cleaner Coleman stove works better and looks better. The benefits of regular cleanings include better fuel efficiency, flame control and no rust or corrosion.

Although there isn't a set schedule for cleaning your stove, you should clean it whenever it is dirty or after a boil-over that causes build-up in the burners. Annual cleanings are recommended before storing your stove at the end of camping season.

Under most conditions, stoves can be wiped out with warm water and dishwashing soap and then dried before storing. For a deeper cleaning, here are a few suggestions:

- ✓ If there has been a boil-over, remove the screw from the centre of each burner and lift off the burner rings and bowl to check the manifold for fluid or food debris. If there is a build-up, clean it with dishwashing soap and warm water before rinsing with clean water.
- ✓ If the stove has a massive amount of grease and dirt build-up inside the case, on the grill or burners, you can take the stove to a car wash and use a high-pressure hose on it. It may be advantageous to remove the cook top to allow access to the stove “tub”. Don't use any type of tire, oven or engine cleaner because it can damage the paint on the inside of the case and the metal of the grate and manifold.
- ✓ If a stove has been cleaned with any type of water hose, turn the stove upside down to ensure all the water is removed from inside the manifold. Any water left inside the manifold can cause it to rust and disturb the flow of fuel to the burner, preventing the stove from burning properly.
- ✓ After cleaning, proper storage of your Coleman stove is also important. Put it into a plastic bag, sealing with a twist tie to prevent spiders or other insects from crawling in the unit, which can block the fuel lines and airflow.

Accessories



Various adapters for use with 20 lb Propane cylinders are available.

Stove Safety

Liquid-fuel stoves are potentially hazardous due to the flammability of the fuels used and the toxicity of the vapours they produce (carbon monoxide). Deaths have occurred due to improper stove use. When using a stove in the field, make sure to follow the safety measures listed below.

- ✓ Do not use stoves without adequate ventilation.
- ✓ Do not attach or remove Propane cylinder near an open flame.
- ✓ Use extreme caution when refuelling. Skin contact with supercooled fuel will cause instant frostbite. Liquid Propane boils (becomes a gas) at -40° C.
- ✓ Check gaskets and “O” rings for cracks before every use.
- ✓ Check for leaks before every use.
- ✓ Remove Propane cylinder before packing and storing.
- ✓ Always replace the plastic cap on Propane cylinders to protect threads and prevent dirt accumulation / contamination.
- ✓ Pack stoves and fuel away from food.
- ✓ Prepare a stable location for the stove, and remove all trip hazards from the kitchen site.
- ✓ Clear away any flammable debris near the stove before lighting.
- ✓ In winter, remove snow from the area beneath and around the stove to prevent melting and upset.
- ✓ Never cook inside a tent or in a confined space. Fire and carbon monoxide poisoning are significant hazards.
- ✓ Test all stoves before your camping trip.
- ✓ Clean your stove before you store it.
- ✓ Dispose empty Propane cylinders properly.

Should a person’s clothing become ignited, **Stop, Drop, and Roll** to extinguish flames.